



# Sight Glass Flange

With Pipe Adapter

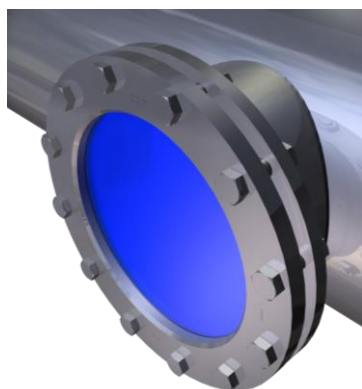
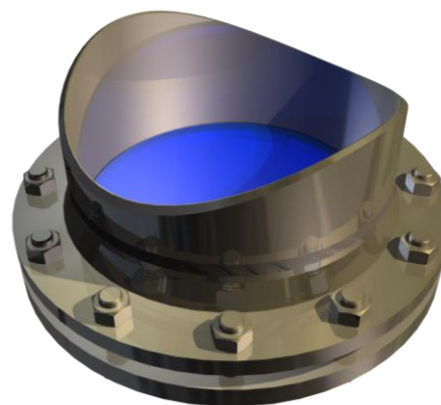
For welding on existing pipes

Type

391

## Application:

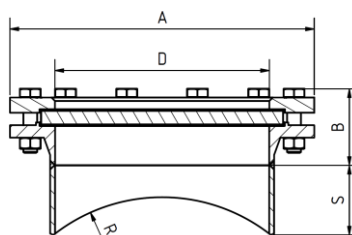
Sight glass flanges with welding sockets are suitable for welding on piping. Opportunities exist anywhere a sight glass is supposed to be added to an existing pipe. Only a matching opening needs to be created on the existing pipe.



## Materials:

Flange:	S235JRG2 1.4571
Glass:	Borosilicate glass DIN 7080 (max. 280°C) Soda Lime Glass DIN 8902 (max. 150°C) Quarzglas (max. 500°C, Sonderanfertigung)
Seal:	C4400 Graphite PTFE NBR Viton

Other materials on request



DN	25	40	50	65	80	100	125	150	200	300	350
A	115	150	165	185	200	220	250	285	340	460	520
C	33,7 x2,6	48,3 x2,6	60,3 x2,9	76,1 x2,9	88,9 x3,2	114,3 x3,6	139,7 x4	168,3 x4,5	219,1 x5,9	323,9 x7,1	355,6 x8
D	28,5	43,1	55	70,1	82,5	107	131,7	160	207	310	340
S	Depending on main pipe										
R	(please provide size information)										
Kg											

(Measurements for PN16, other sizes and standards on request)

## Design considerations:

Mounting the sight glass will influence the main pipe mechanically and has to be considered according to AD 2000 instructions B9.

Technical changes and errors reserved!



# Sight Glass Flange

With Pipe Adapter

For welding on existing pipes

**Type  
391**

Product code:

	DN	Main pipe	Flange	Glass	Seal	
11	391	Acc. To table	∅ of pipe	1: S235JRG 2: 1.4571 3: Base Flange VA, Cover Flange St. 4: Base Flange St., Cover Flange VA 5: Duplex	1: borosilicate glass 2: Soda Lime Glass 3: Quartz 4: BS + PTFE Wiper 5: BS + Sil. Wiper	1: PTFE 2: Viton 3: NBR 4: C4400 5: Silicone 6: EPDM 7: Graphite 8: Special

### ACI Type 391

DN100 on DN500

Example:

Flange 1.4571

11-391-100-500-2-1-1

Borosilicate glass

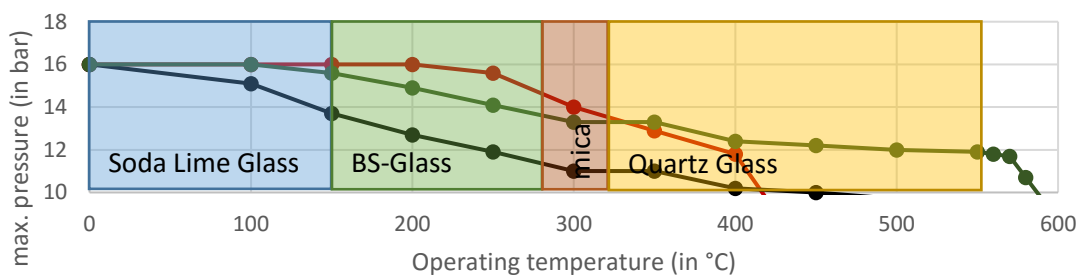
Seal PTFE

## Caution!

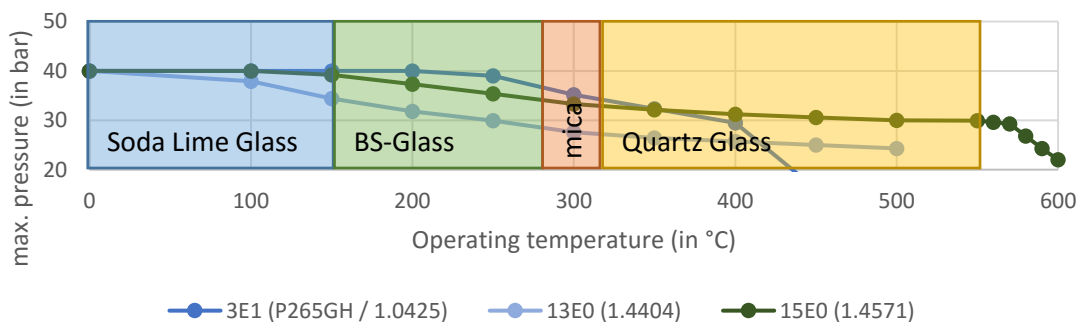
Observe pressure-temperature ratings acc. to DIN EN 1092-1!

For steam or corrosive media we recommend mica disks!

temperature dependence of max. pressure for PN 16



temperature dependence of max. pressure for PN 40



Technical changes and errors reserved!

Ebora Process Automation • [www.ebora.nl](http://www.ebora.nl) • [info@ebora.nl](mailto:info@ebora.nl)

Version 2016-06-27