



High Pressure Sight Glass

With flanged connections, PN160

**Type
520**

Application:

For observation of filling and flow in piping. The Sight Glass enables a reliable survey of function and performance of single devices and complete plants.

160 bar, max. 280°C

Special constructions for
1000 bar and higher
temperatures possible on
request!



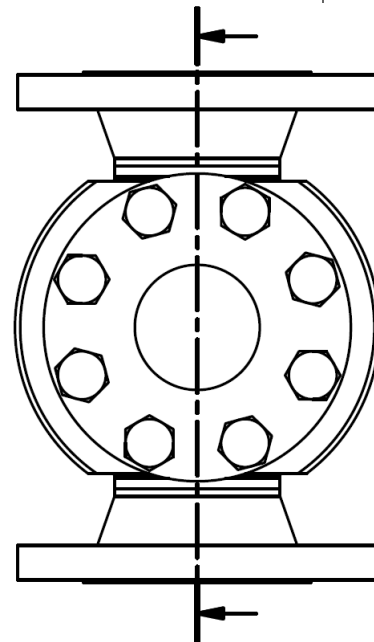
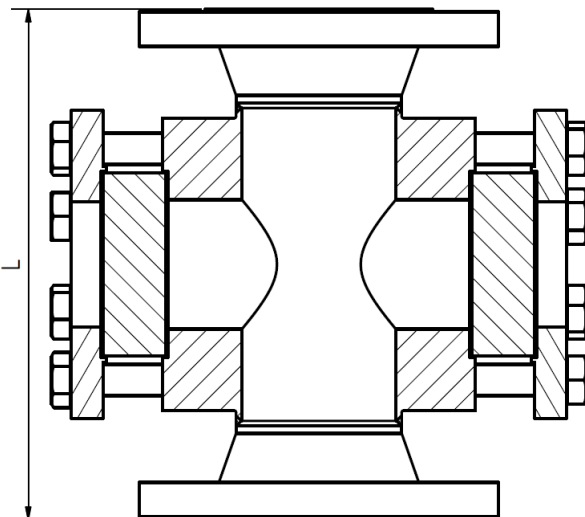
Materials:

body:	1.4571, 1.7335, P265GH
Glass:	Borosilicate glass DIN 7080 Quartz Glass mica META®-Glass
Seal:	Graphite MST

Other materials available on request

Length	DIN EN 558-1 (if possible)
Flanges	DIN EN 1092-1 ASME B16.5

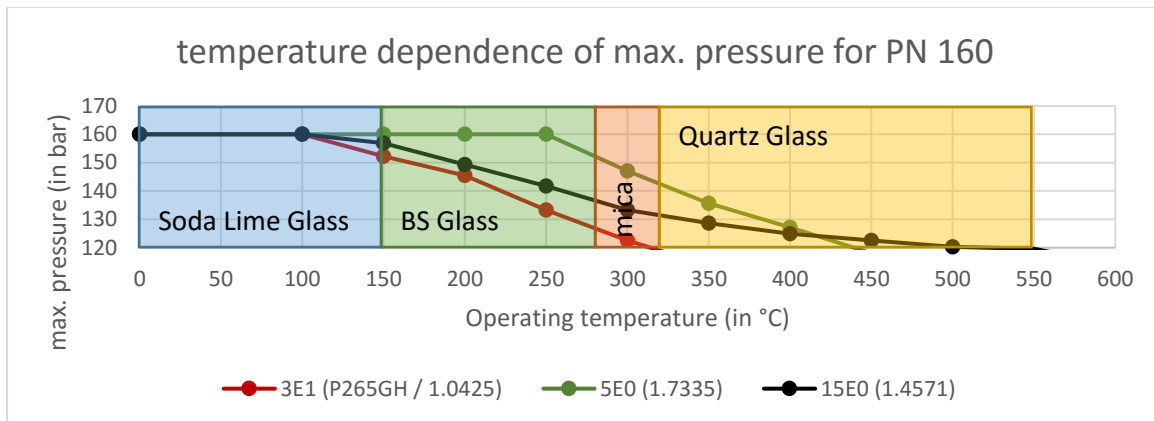
Special measurements and other
standards available on request.
Viewport in general 1 nominal
size below connection size.



Technical changes and errors reserved!

Caution!

Observe pressure-temperature ratings acc. to DIN EN 1092-1!
For corrosive media or steam we recommend mica disks to protect the glass



Product Code:

		DN	PN	Glass	Seal
11	520	Acc. To standard	Acc. To standard	1: borosilicate glass 2: Soda Lime Glass 5: Quartz Glass 6: BS + mica	1: PTFE 2: Viton 3: NBR 4: C4400 5: Silicone 6: EPDM 7: Graphite 8: Special

ACI Type 520

PN160

DN150

Borosilicate glass

Seal Graphite

Standard construction

Example:

11-520-150-160-1-7

Caution!

Some combinations of geometry and material might be unavailable!
Please contact us in any case before order!

Recommendation:

For corrosive media or steam, we recommend mica disks.

Technical changes and errors reserved!